

Agri-foods Vital Statistics



REPATRIATED: With little fanfare, XL Foods Inc. reached agreement in June to buy Lakeside Farm Industries Ltd. in Brooks, Canada's largest beef packing plant, from Arkansas-based Tyson Foods Inc. XL Foods, owned by the privately held Nilsson Bros. Group of Edmonton, will pay \$57 million of the \$107-million purchase price upon closing (expected this month) and the remainder over a five-year period. It has not yet announced any changes to Lakeside, which employs 2,300 people and has the capacity to slaughter and process 4,700 head of cattle a day. The multinational Tyson said it plans to focus its operations in Asia and Latin America.

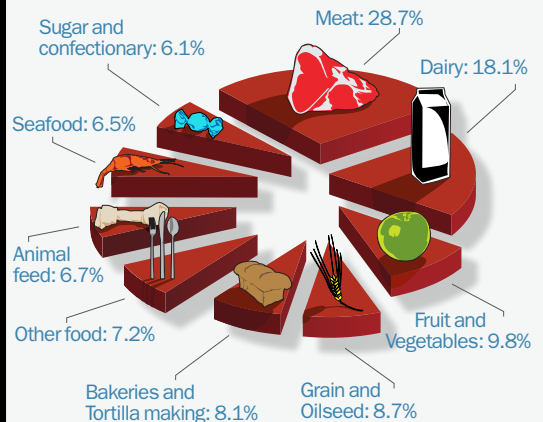
Meat the Facts

- Alberta beef and live cattle exports are worth \$1.6 billion a year. Pork and live hog exports are worth \$400 million. About 15% of Canadian hog slaughter takes place in Alberta.
- In 2005, just four plants accounted for 91% of all beef slaughter in Canada. Three of those plants are located in Alberta.
- The livestock industry in Alberta directly employs more than 30,000 people.
- Since 1993, the share of Canada's processed food shipments bound for export markets has risen to 29% from 17%. The share of those exports bound for the United States has increased to 69% from 63% in 1993.
- In 2006 Canada was the fourth-largest exporter and fifth-largest importer of agriculture and agri-food products in the world, with exports and imports valued at \$28 billion and \$22 billion respectively.

Source: Statistics Canada, Conference Board of Canada

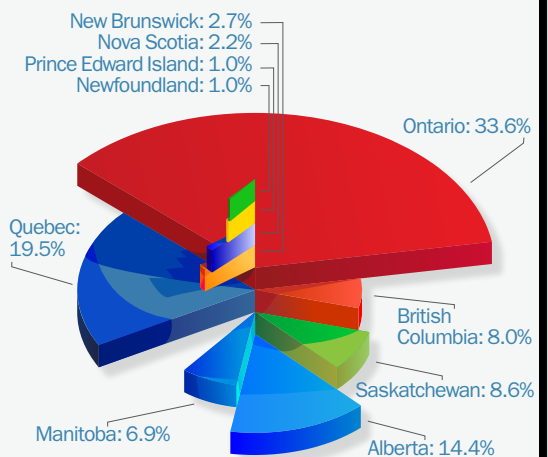
A Fine Looking Spread

CANADA'S AGRI-FOOD INDUSTRY, BY SECTOR, 2005



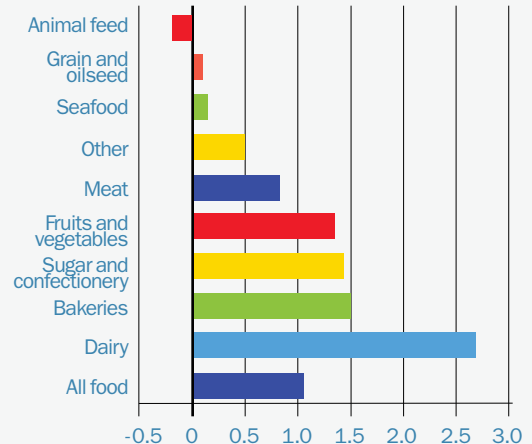
Source: Statistics Canada

CANADA'S AGRI-FOOD INDUSTRY, BY PROVINCE



Source: Statistics Canada

AVERAGE ANNUAL PRICE INCREASE, BY INDUSTRY SEGMENT, 1995-2005 (%)



Source: Conference Board, Statistics Canada

AV extended coverage at albertaventure.com | Looking for industry-related articles? Visit the Resources section of albertaventure.com and search by industry.